

## Study of Schools receiving Archive Project Students

Progress is well documented increasing the 9<sup>th</sup> to 10<sup>th</sup> grade promotion rate at Pinkston and Sunset High Schools, the two main high schools attended by Quintanilla Students.

The first class to write a letter for the School Archive was the 2005 class at Quintanilla. They were not able to see the Archive itself as it was not installed till the summer of 2005, after they left for high school.

The 8th Grade Class of 2006 were the first class to write Archive letters and also have their photos taken in front of the Archive with their Language Arts Class. They are the 10<sup>th</sup> grade class of 2007-2008. They graduate in 2010.

8th Grade Class of 2007 were the first class at Quintanilla to never have known Quintanilla without the Archive Project. Their photos were taken holding their letters with their Language Arts Class. Then they each placed their letter into the Archive themselves where it stays until their 10-year class reunion.

<b>Pinkston Enrollment</b>	1997-1998	1998-1999	1999-2000	2000-2001	2001-2002	2002-2003	2003-2004	2004-2005	<b>Avg. 2001-2005</b>	<b>2005-2006</b>	<b>2006-2007</b>	<b>2007-2008</b>	<b>2008-2009</b>
9 <sup>th</sup>	345	297	313	331	323	369	431	465	397	491	490	461	399
10 <sup>th</sup>	228	194	178	174	177	165	230	274	212	284	303	324	322
<b>Percent of 9<sup>th</sup> in next year's 10<sup>th</sup></b>		<b>56.2%</b>	<b>59.9%</b>	<b>55.6%</b>	<b>53.5%</b>	<b>51.1%</b>	<b>62.3%</b>	<b>63.6%</b>	<b>57.6%</b>	<b>61.1%</b>	<b>61.7%</b>	<b>66.1%</b>	<b>69.8%</b>
11 <sup>th</sup>	133	191	171	181	147	142	131	172	148	210	223	222	250
Decrease 10 <sup>th</sup> - 11 <sup>th</sup>		16.2%	11.9%	-1.7%	15.5%	19.8%	20.6%	25.2%	20.3%	23.4%	21.5%	26.7%	22.8%
12 <sup>th</sup>	159	115	166	128	117	123	116	123	120	168	181	179	216
Total student enrollment	865	797	828	814	764	799	908	1034	876	1153	1197	1186	1187

<b>Sunset Enrollment</b>	1997-1998	1998-1999	1999-2000	2000-2001	2001-2002	2002-2003	2003-2004	2004-2005	<b>Avg. 2001-2006</b>	<b>2005-2006</b>	<b>2006-2007</b>	<b>2007-2008</b>	<b>2008-2009</b>
9 <sup>th</sup>	758	737	705	714	855	894	818	813	845	824	794	732	703
10 <sup>th</sup>	394	427	461	410	546	496	482	498	506	545	572	594	591
<b>Percent of 9<sup>th</sup> in next year's 10<sup>th</sup></b>		<b>56.3%</b>	<b>62.6%</b>	<b>58.2%</b>	<b>76.5%</b>	<b>58.0%</b>	<b>53.9%</b>	<b>60.9%</b>	<b>62.3%</b>	<b>67.0%</b>	<b>69.4%</b>	<b>74.8%</b>	<b>80.7%</b>
11 <sup>th</sup>	433	295	301	341	358	382	423	385	387	396	490	498	549
Decrease 10 <sup>th</sup> - 11 <sup>th</sup>		25.1%	29.5%	26.0%	12.7%	30.0%	14.7%	20.1%	19.4%	20.5%	10.1%	12.9%	7.6%
12 <sup>th</sup>	391	347	277	241	275	308	330	373	322	346	372	454	472
Total student enrollment	1976	1806	1744	1706	2034	2080	2053	2069	2059	2111	2228	2278	2315

The following spreadsheet combines the numbers from both those above:

<b>Combined Enrollment</b>	1997-1998	1998-1999	1999-2000	2000-2001	2001-2002	2002-2003	2003-2004	2004-2005	<b>Avg. 2001-2005</b>	2005-2006	<b>2006-2007</b>	<b>2007-2008</b>	<b>2008-2009</b>	
9 <sup>th</sup>	1103	1034	1018	1045	1178	1263	1249	1278	1242	1315	1284	1193	1102	
10 <sup>th</sup>	622	621	639	584	723	661	712	772	717	829	875	918	913	
<b>Percent of 9<sup>th</sup> in next year's 10<sup>th</sup></b>		<b>56.3%</b>	<b>61.8%</b>	<b>57.4%</b>	<b>69.2%</b>	<b>56.1%</b>	<b>56.4%</b>	<b>61.8%</b>	<b>60.9%</b>	<b>64.9%</b>	<b>66.5%</b>	<b>71.5%</b>	<b>76.5%</b>	
11 <sup>th</sup>	566	486	472	522	505	524	554	557	535	606	713	720	799	
Decrease 10 <sup>th</sup> - 11 <sup>th</sup>		41.4%	24.0%	18.3%	13.5%	27.5%	16.2%	21.8%	19.8%	21.5%	14.0%	17.7%	13.0%	
12 <sup>th</sup>	550	462	443	369	392	431	446	496	441	514	553	633	688	
Total student enrollment	2841	2603	2572	2520	2798	2879	2961	3103	2935	3264	3425	3464	3502	

**Conclusions from above enrollment patterns:**

1) The percent of the 9<sup>th</sup> grade who enrolled in the 10<sup>th</sup> grade grew each year during the past three years at both schools, especially when compared with that average for the previous 6 years. By the third year it had increased over 8 percentage points at Pinkston, from the 6 year average of 57.7% to 66.1%, and over 13 points at Sunset, from the 6-year average of 61.7% to 74.8% in 2008.

2) The 9<sup>th</sup> grade enrollment has consistently gone down due to a lowering retention rate. Fewer students are repeating the 9<sup>th</sup> grade. Students are entering the 9<sup>th</sup> grade better motivated and better prepared for 9<sup>th</sup> grade work.

3) 10<sup>th</sup> grade numbers are going up constantly due to a combination of the factors in #1 above as well as better motivated students in general. It is in the 10<sup>th</sup> grade enrollment number increases we will see the truth in the fact that fewer students are leaving. To continue these increases it is recommended that there be writing projects in high school that draw on the Archive Project experience to remind students of the planned reunion, now less than 8 years away.

<b>2001-2005</b>	<b>2005-2006</b>
<b>60.9%</b>	<b>64.9%</b>

**A study selecting out for Quintanilla students at these two schools would clarify the amount Quintanilla students, and the Archive Project, may have contributed to these enrollment changes over the past 4 years.**

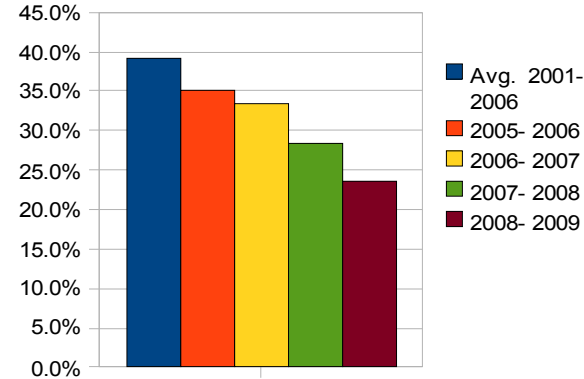
[www.studentmotivation.org](http://www.studentmotivation.org)

Compiled 5-12-08 By Bill Betzen, Quintanilla Middle School, Computer Applications Teacher, Dallas, Texas

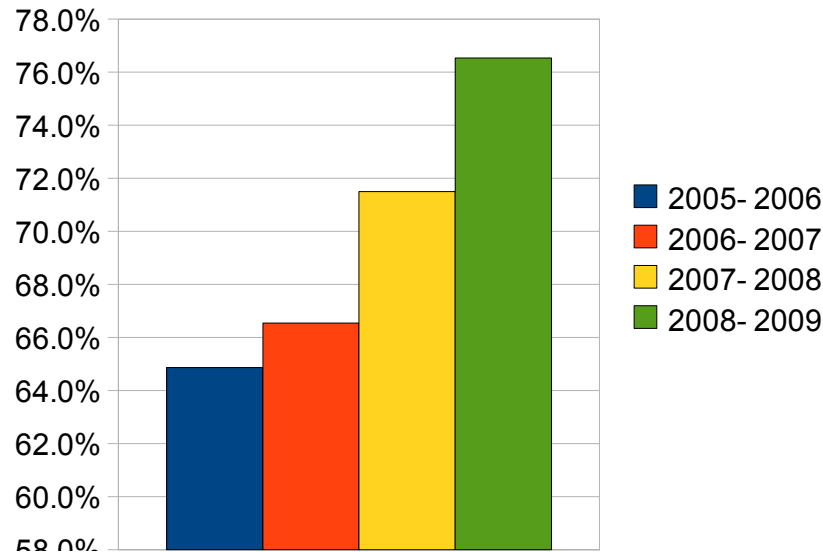
Percent of last year's 9th in this year's 10 <sup>th</sup> grade		Avg. 2000-2005	2005-2006	2006-2007	2007-2008
Pinkston		57.7	61.1	61.7	66.1
Sunset		61.7	67	69.4	74.8

Remember that the 9<sup>th</sup> to 10<sup>th</sup> grade transition is when the largest percentage of dropouts leave school. If we can lessen the percentage of students who leave during this critical transition then we are well on our way to lowering the entire dropout rate.

**9th to 10th grade enrollment loss**  
Archive Project started in 2005



**Percent of 9th grade making it to 10th grade**







Avg. 2000-2005	2005- 2006	2006- 2007	2007- 2008
1172	1315	1284	1193
682	829	875	918
<b>60.4%</b>	<b>64.9%</b>	<b>66.5%</b>	<b>71.5%</b>
522	606	713	720
20.2%	21.5%	14.0%	17.7%
430	514	553	633
2806	3264	3425	3464

2006- 2007	2007- 2008	2008- 2009
<b>66.5%</b>	<b>71.5%</b>	<b>76.5%</b>







<b>Pinkston Enrollment</b>	1997- 1998	1998- 1999	1999- 2000	2000- 2001	2001- 2002
9 <sup>th</sup>	345	297	313	331	323
10 <sup>th</sup>	228	194	178	174	177
<b>Percent of 9<sup>th</sup> in next year's 10<sup>th</sup></b>		<b>56.2%</b>	<b>59.9%</b>	<b>55.6%</b>	<b>53.5%</b>
11 <sup>th</sup>	133	191	171	181	147
Decrease 10 <sup>th</sup> - 11 <sup>th</sup>		16.2%	11.9%	-1.7%	15.5%
12 <sup>th</sup>	159	115	166	128	117
Total student enrollment	865	797	828	814	764

<b>Sunset Enrollment</b>	1997- 1998	1998- 1999	1999- 2000	2000- 2001	2001- 2002
9 <sup>th</sup>	758	737	705	714	855
10 <sup>th</sup>	394	427	461	410	546
<b>Percent of 9<sup>th</sup> in next year's 10<sup>th</sup></b>		<b>56.3%</b>	<b>62.6%</b>	<b>58.2%</b>	<b>76.5%</b>
11 <sup>th</sup>	433	295	301	341	358
Decrease 10 <sup>th</sup> - 11 <sup>th</sup>		25.1%	29.5%	26.0%	12.7%
12 <sup>th</sup>	391	347	277	241	275
Total student enrollment	1976	1806	1744	1706	2034

<b>Combined Enrollment</b>	1997- 1998	1998- 1999	1999- 2000	2000- 2001	2001- 2002
9 <sup>th</sup>	1103	1034	1018	1045	1178
10 <sup>th</sup>	622	621	639	584	723
<b>Percent of 9<sup>th</sup> in next year's 10<sup>th</sup></b>		<b>56.3%</b>	<b>61.8%</b>	<b>57.4%</b>	<b>69.2%</b>

Sheet2

11 <sup>th</sup>	566	486	472	522	505
Decrease 10 <sup>th</sup> - 11 <sup>th</sup>		41.4%	24.0%	18.3%	13.5%
12 <sup>th</sup>	550	462	443	369	392
Total student enrollment	2841	2603	2572	2520	2798

2002- 2003	2003- 2004	2004- 2005	Avg. 2001-2005	2005- 2006	2006- 2007	2007- 2008
369	431	465	397	491	490	461
165	230	274	212	284	303	324
<b>51.1%</b>	<b>62.3%</b>	<b>63.6%</b>	<b>57.6%</b>	<b>61.1%</b>	<b>61.7%</b>	<b>66.1%</b>
142	131	172	148	210	223	222
19.8%	20.6%	25.2%	20.3%	23.4%	21.5%	26.7%
123	116	123	120	168	181	179
799	908	1034	876	1153	1197	1186

2002- 2003	2003- 2004	2004- 2005	Avg. 2001-2006	2005- 2006	2006- 2007	2007- 2008
894	818	813	845	824	794	732
496	482	498	506	545	572	594
<b>58.0%</b>	<b>53.9%</b>	<b>60.9%</b>	<b>62.3%</b>	<b>67.0%</b>	<b>69.4%</b>	<b>74.8%</b>
382	423	385	387	396	490	498
30.0%	14.7%	20.1%	19.4%	20.5%	10.1%	12.9%
308	330	373	322	346	372	454
2080	2053	2069	2059	2111	2228	2278

2002- 2003	2003- 2004	2004- 2005	Avg. 2001-2006	2005- 2006	2006- 2007	2007- 2008
1263	1249	1278	1242	1315	1284	1193
661	712	772	717	829	875	918
<b>56.1%</b>	<b>56.4%</b>	<b>61.8%</b>	<b>60.9%</b>	<b>64.9%</b>	<b>66.5%</b>	<b>71.5%</b>

Sheet2

524	554	557	535	606	713	720
27.5%	16.2%	21.8%	19.8%	21.5%	14.0%	17.7%
431	446	496	441	514	553	633
2879	2961	3103	2935	3264	3425	3464

<b>2008- 2009</b>
399
322
<b>69.8%</b>
250
22.8%
216
1187

<b>2008- 2009</b>
703
591
<b>80.7%</b>
549
7.6%
472
2315

<b>2008- 2009</b>
1102
913
<b>76.5%</b>

799
13.0%
688
3502